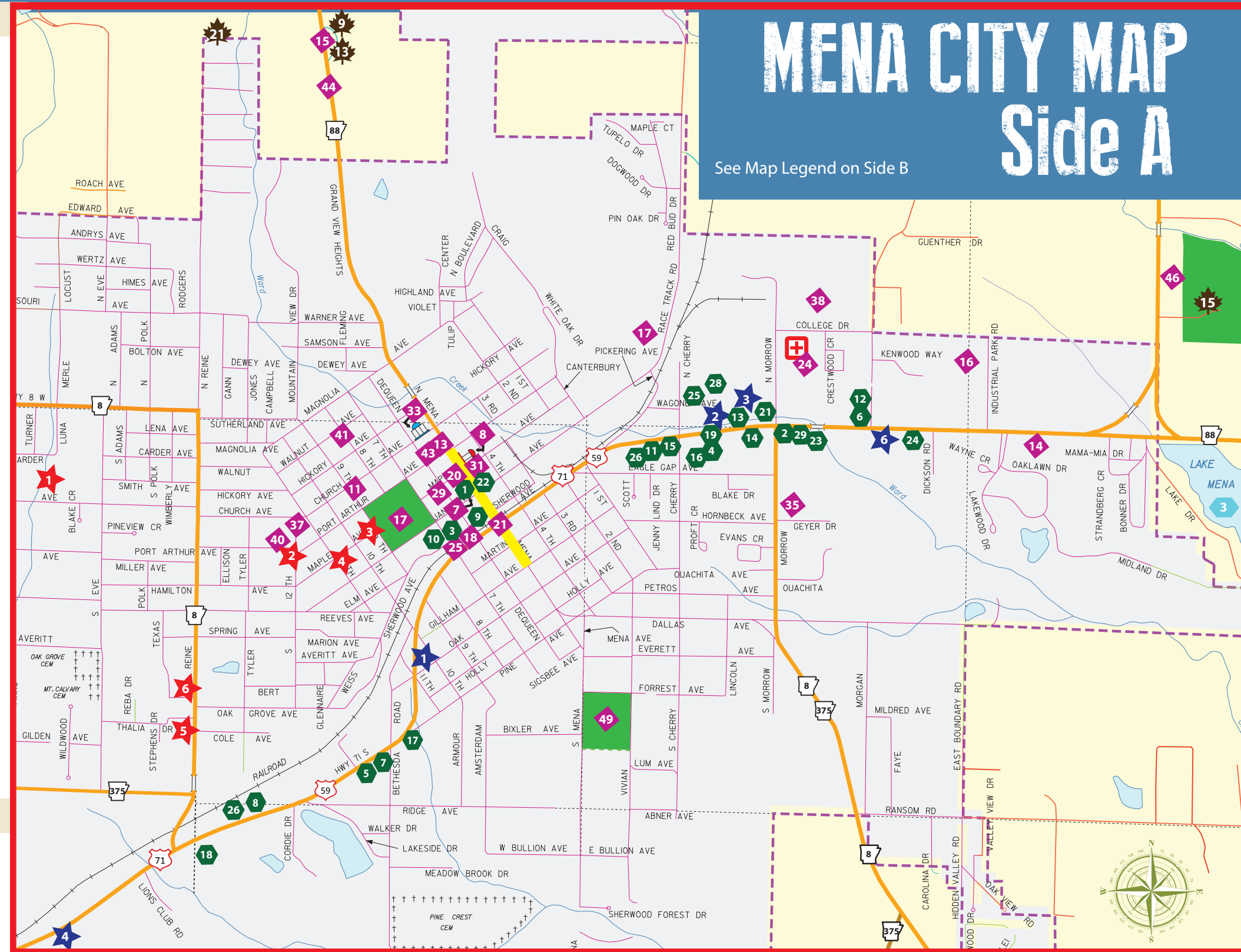


POINTS OF INTEREST

- Abernathy Springs**
Side B
- American Legion/Veteran's Park**
Side B
- Arkansas Native Plant & Wildlife Center**
Side B
- Bee Mountain Fire Tower (Historic)**
Side B
- Blue Hole**
Side B
- Board Camp Crystal Mine**
Side B
- Chameleon Arts**
Side A
- City Hall (Historic Old Post Office)**
Side A
- CMA Iron Mountain**
Side B
- CMA National/International Support Center**
Side B
- Ebenezer Monument (Historic)**
Side A
- Elks Lodge**
Side A
- Esso Gas Station (Historic)**
Side A
- Forest Service Ranger Station**
Side A
- Forest Service Visitor's Center**
Side A
- Industrial Park**
Side A
- Janssen Park (Historic)**
Side A
- KCS Depot Museum (Historic)**
Side A
- Lum & Abner Museum**
Side B
- Mena Art Gallery**
Side A
- Mena Commercial District (Historic)**
Side A
- Mena Intermountain Municipal Airport**
Side B
- Mena/Oden Ranger Station**
Side B
- Mena Regional Health System**
Side A
- Mena/Polk County Chamber of Commerce**
Side A
- Mountain Fork Bridge (Historic)**
Side B
- Mountain Glory Station**
Side B
- Municipal Aviation Complex**
Side B
- National Guard Armory (Historic)**
Side A
- Ouachita Country Club Golf Course**
Side B
- Ouachita Little Theatre**
Side A
- Pioneer Cemetery**
Side B
- Polk County Court House (Historic)**
Side A
- Polk County Fairgrounds**
Side B
- Post Office**
Side A
- Queen Wilhelmina Lodge (Historic)**
Side B
- Old Redman Hospital (Historic)**
Side A
- Rich Mountain Community College**
Side A
- Renegade Ranch ATV Trails**
Side B
- Scoggins House (Historic)**
Side A
- St. Agnes Catholic Church (Historic)**
Side A
- State Line Marker (Historic)**
Side B
- Studebaker Building (Historic)**
Side A
- Talimena National Scenic Byway**
Side A & B
- Tall Peak Fire Tower (Historic)**
Side B
- Tapley Park**
Side A
- Wolf Pen Gap ATV Trail System**
Side B
- Wonder House (Historic)**
Side B
- McMillan Park**
Side A

LAKES

- Gillham Lake**
Side B
- Irons Fork Lake**
Side B
- Mena Lake**
Side A & B
- Shady Lake**
Side B
- Lake Wilhelmina**
Side B



HOTELS & MOTELS

- Budget Inn**
1018 Hwy 71 S 479-394-2400
Side A
- Executive Inn**
704 Hwy 71 N 479-394-3710
Side A
- Limetree Inn**
804 Hwy 71 N 800-536-4366
Side A
- Ozark Inn**
Hwy 71 S 479-394-1100
Side A
- Queen Wilhelmina Lodge**
Hwy 88 W 800-264-2477
Side B
- Sun Country Inn**
Hwy 71 N 877-394-7477
Side A

BED & BREAKFASTS- HISTORIC LOFT

- ABear's Den**
2205 Church Avenue 479-394-8519
Side A
- The Carriage House Inn**
1202 Port Arthur 479-243-0957
Side A
- Janssen Park Place**
511 9th Street 479-394-1880
Side A
- Johnson Manor Bed & Breakfast**
600 11th Street 214-673-7764
Side A
- Rainey Day Resort**
1407 S Reine St 479-234-1273
Side A
- Sassafras Inn**
1201 Reine St. S 479-234-7233
Side A

RESORTS

- Mena Mountain Resort**
2817 Hwy 71 N 479-394-3100
Side B
- Dreamland Resort**
247 Hwy 375 E 479-216-8432
Side B

CABINS CAMPSITES RVs

- Adventure Trails & Retreat**
254 Polk 602 479-394-5505
- ATV Trail House**
2274 Hwy 375 E 479-394-1724
- Backwoods Lodge**
560 Polk 78 870-818-0892
- Boardcamp Campground**
110 Hickory Ridge Rd
479-243-0771
- Clear Sky Ridge**
383 Massey Ln 479-274-0759
- CMA Iron Mt. Cabin & Rv Camping**
3994 US Hwy 71 870-389-6196
- Cornerstone Mountain Retreat**
255 Polk 30 479-234-8245
- Cossatot River Wilderness Lodge**
479-385-1111
- Eagle Valley Hideaway**
117 Polk 600 479-394-1613
- Heath Valley Cabins**
1210 Polk Rd 61 479-243-0911
- Heath Valley Campground**
928 Polk 61 479-394-1177
- Kate's Creek Cabins**
Polk 675 479-234-3654
- Little Coon Guest House**
129 Blossom Ln 903-812-1527
- McCurdy's Gateway**
223 Polk 64 479-414-8218
- Meadow Pine Cabins**
689 Polk Rd 26 479-243-3752
- Mena Mountain Top Cabins**
141 Cabins Ln 479-216-1598
- Outback Cabins**
186 Polk 624 479-394-3689
- Polk County Fairgrounds RV Park**
Fairgrounds Rd 479-243-8104
- Queen Wilhelmina State Park**
3877 Hwy 88 W 800-264-2477
- Renegade Ranch**
3680 Hwy 88 E 479-394-3848
- Rich Mountain Log Cabins**
2127 Hwy 270 479-243-9400
- Rich Mountain RV Park**
1933 Hwy 270 479-394-5300
- Riverside Retreat**
300 Polk 153, Hatfield, AR
479-234-1926
- Shadow Mountain RV Park**
3708 Hwy 71 S 479-394-6099
- Shady Lake Recreation Area**
Hwy 246
- Spring Ridge Cabin**
138 Polk 677 479-234-7929
- Stonehill Cottages**
140 Mossy Oak Ln 479-234-1739
- Sugar Creek Lodge**
135 Polk 602 866-394-7747
- The Shady Rest**
259 Polk 81 479-394-5091
- WhiteHouse Mountain Retreat**
125 BlackBerry Ln 479-216-4985
- Willowbrook Cottage & Cabins**
1047 Polk 42 479-883-5492

CABINS CAMPSITES RVS

- 32. Wolfpen ATV Campground
559 Polk 61 479-394-0404
- 33. Wolf Pen Creek Cabins
1314 Polk 61 479-394-1844
- 34. Wolf Pen Cabins
1255 Polk 61 214-505-5461
- 35. Wolf Trail Cabins
118 RoadRunner Ln 817-999-8449
- 36. Ridgeline Trails Arkansas
Vandervoort 479-243-3391

STATE PARKS

- 1. Cossatot River State Park
Side B
- 2. Queen Wilhelmina State Park
Side B

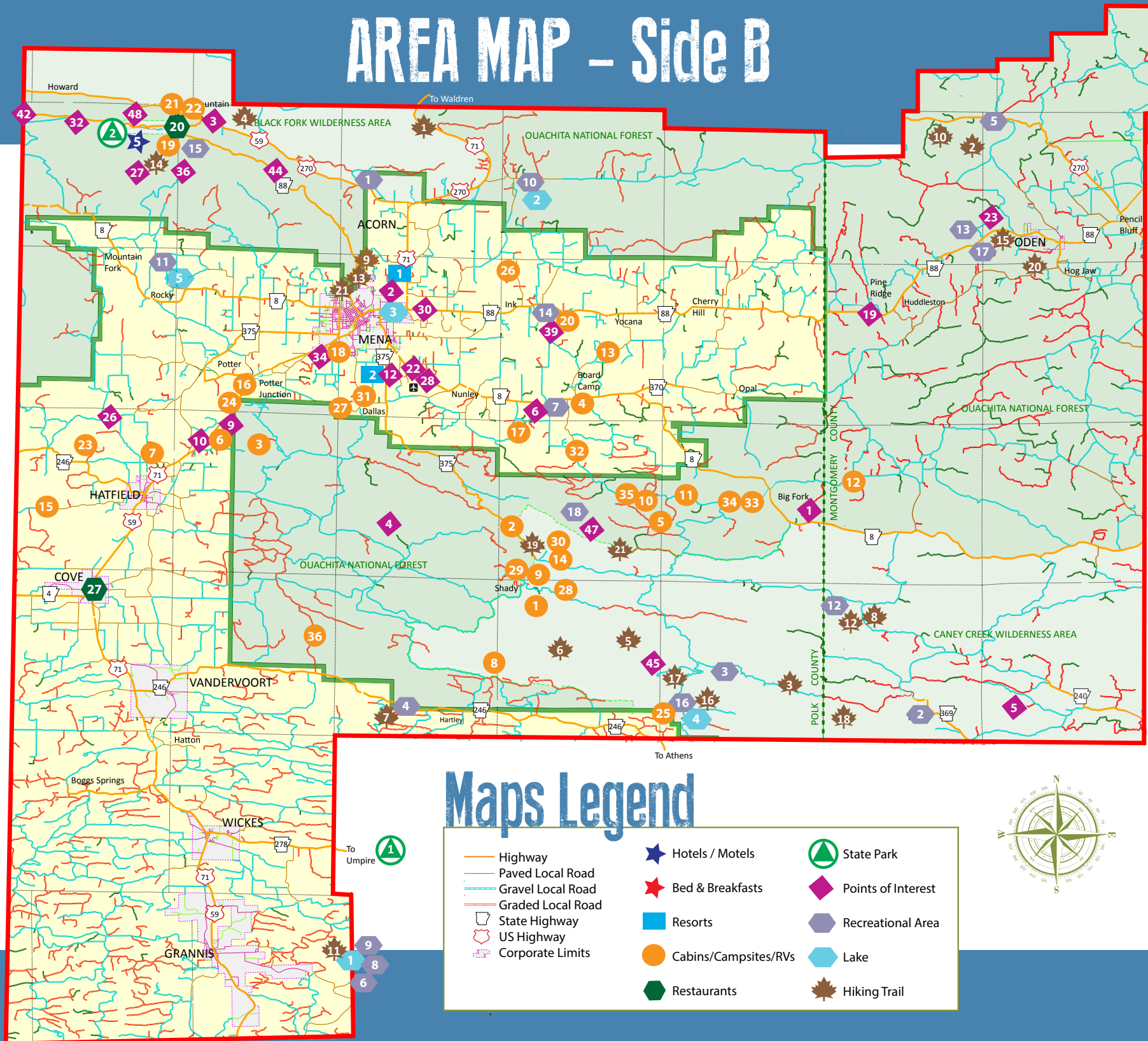
RECREATIONAL AREAS

- 1. Acorn Shooting Range
Side B
- 2. Albert Pike (Day Use Only)
Side B
- 3. Bard Springs
Side B
- 4. Brushy Creek
Side B
- 5. Big Brushy
Side B
- 6. Big Coon Creek
Side B
- 7. Board Camp Crystal Mine
Side B
- 8. Coon Creek
Side B
- 9. Cossatot Reefs
Side B
- 10. Irons Fork Lake
Side B
- 11. Lake Wilhelmina
Side B
- 12. Little Missouri Falls
Side B
- 13. Oden Shooting Range
Side B
- 14. Renegade Ranch Arrowhead Field
Side B
- 15. Rich Mountain Lookout Tower
Highest Point in Ouachita
Mountain Range 2,681 feet
Side B
- 16. Shady Lake
Side B
- 17. Shirley Creek
Side B
- 18. Wolf Pen Gap
Side B

HIKING TRAILS

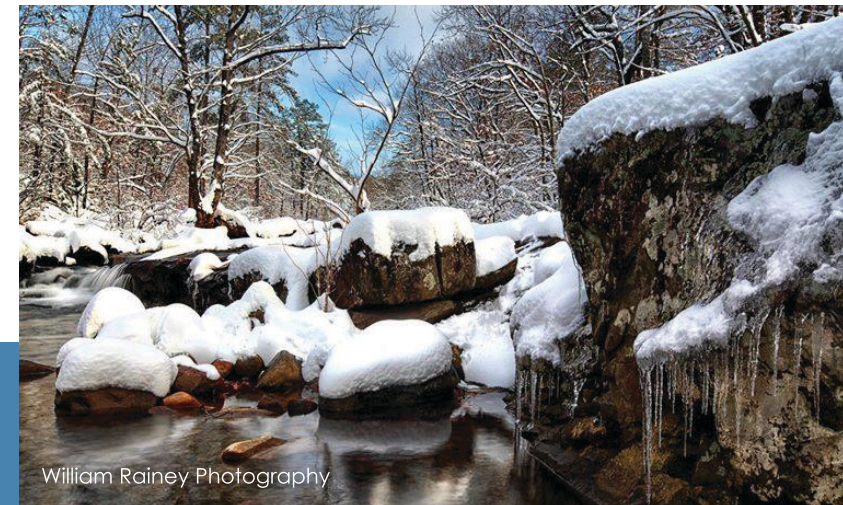
- 1. Ouachita National Recreational Trail
Side B
- 2. Big Brushy Trail Complex
Side B
- 3. Big Fork Trail
Side B
- 4. Black Fork Mountain Trial
Side B
- 5. Buckeye Trail
Side B
- 6. Caney Creek Wilderness Trail
Side B
- 7. Cossatot River Natural Area
Side B
- 8. Eagle Rock Loop
Side B
- 9. Earthquake Ridge
Side A
- 10. Fourche Mountain Trail
Side B
- 11. Gillham Lake Walking Trail
Side B
- 12. Little Missouri Trails
Side B
- 13. Orchard Trail
Side A & B
- 14. Queen Wilhelmina State Park
Side B
- 15. Serendipity Trail
Side B
- 16. Shady Lake Trail
Side B
- 17. Tall Peak Trail
Side B
- 18. Viles Branch Equestrian Trail
Side B
- 19. Wolf Pen Gap Trail System
Side B
- 20. Womble Trail
Side B
- 21. Ward Lake Hiking Trail
Side A & B

AREA MAP - Side B



RESTAURANTS

- 1. American Artisans
615 Mena St 479-394-1112
- 2. Baskin Robbins
901 Hwy 71 N 479-394-0363
- 3. Branding Iron Steakhouse & BBQ
623 Sherwood Ave
479-437-3240
- 4. Chiquita's Mexican Restaurant
703 Hwy 71 N 479-394-6201
- 5. Chopping Block Steakhouse & Seafood
1156 Hwy 71 S 479-394-6410
- 6. The Corner
1100 Hwy 71 N 479-394-1120
- 7. Country Express
1146 Hwy 71 S 479-394-7310
- 8. Donut Palace
1321 Hwy 71 S 479-243-4564
- 9. Friendship House
517 Sherwood Avenue
479-394-2385
- 10. James' Supersave Deli
707 7th Street 479-394-7257
- 11. Kentucky Fried Chicken/KFC
403 Hwy 71 N 479-394-5482
- 12. LaVilla Mexican Restaurant
1100 Hwy 71 N 479-243-0822
- 13. Limetree Restaurant
804 Hwy 71 N 479-394-4702
- 14. McDonald's
709 Hwy 71 N 479-394-1131
- 15. Myers' Cruzer's Drive In
409 Hwy 71 N 479-394-5550
- 16. New China Restaurant
601 Hwy 71 N 479-394-5534
- 17. Paisano's Italian Made From Scratch
1110 Hwy 71 S 479-385-5055
- 18. Papa's Mexican Cafe
1506 Hwy 71 S 479-394-6521
- 19. Pizza Hut
703 Hwy 71 N 479-394-5952
- 20. Queen's Restaurant
(Queen Wilhelmina State Park)
Talimena Scenic Drive
479-394-2863
- 21. Simple Simon's Pizza
106 N Morrow Street
479-394-0300
- 22. Skyline Cafe
618 Mena Street 479-394-5152
- 23. Sonic Drive-In
1001 Hwy 71 N 479-437-3001
- 24. Stache's Cookery
1411 Hwy 71 N 479-394-3737
- 25. Subway
1425 Hwy 71 S 479-394-2510
Inside Walmart Supercenter
479-394-7734
- 26. Taco Bell
403 Hwy 71 N 479-394-5482
- 27. Tres Agaves - Cove
5563 Hwy 71 Cove
870-387-3302
- 28. Walmart Deli
600 Hwy 71 N 479-394-0025
- 29. Wendy's
901 Hwy 71 N 479-394-1572



William Rainey Photography